

FOUNDATION FOR ORGANISATIONAL
RESEARCH AND EDUCATION
FORE SCHOOL OF MANAGEMENT
NEW DELHI

FINAL PLACEMENT REPORT

Batch of 2021-23





PLACEMENTS 2021-23

OVERVIEW

FORE School of Management successfully concluded the Final Placement process for the Batch of 2021-23, with a total of 152 corporate partners associating with the institution, reinstating their faith in the institution. The Batch comprises of 369 students across courses of PGDM, PGDM IB, PGDM FM & PGDM BDA.

Final Placements this year were both faster and better, which was manifested in a very good Average CTC and Median CTC, and multiple job offers. In addition to higher salary packages, there has been an improvement in the diversity of recruiters and profiles offered.

In terms of industry sectors, IT/ ITES made 34% of the total offers and BFSI made 27% of the offers. MR & Consulting hired 17% from the total batch whereas FMCG, FMCD, and Automobile made 12% of the offers. 10% of the total offers were made by other sectors that recruited FORE students.

The Placement Team would like to express its heartfelt thanks to the Esteemed Corporates and our Alumni for their ceaseless support and assistance.

BATCH PROFILE

2021-23



369

STUDENTS



60%

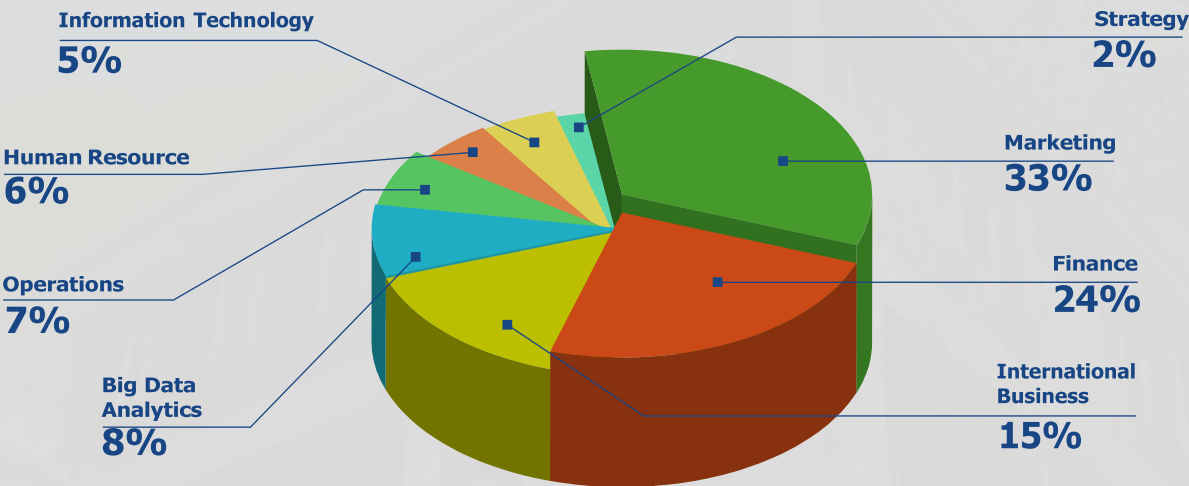
MALE



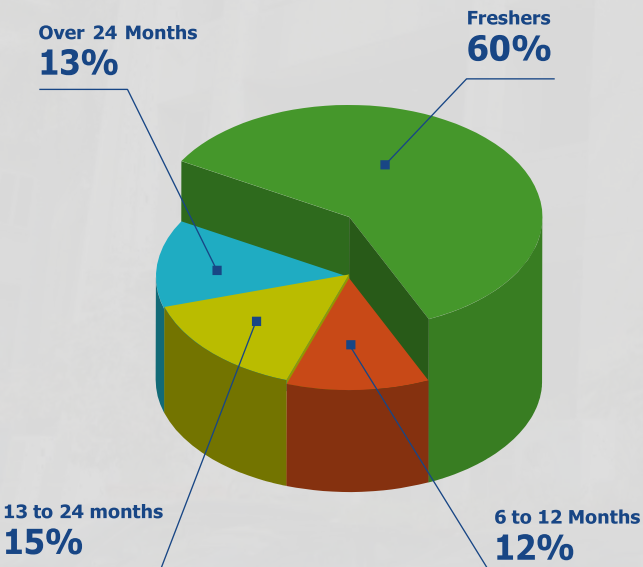
40%

FEMALE

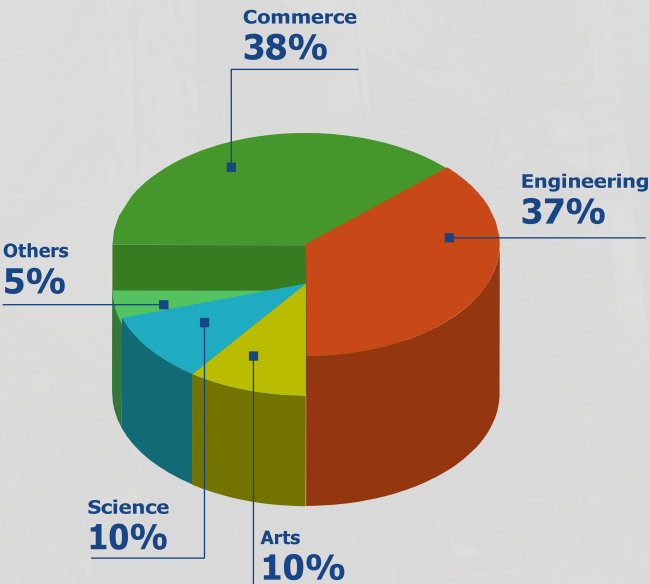
SPECIALIZATIONS



WORK EXPERIENCE

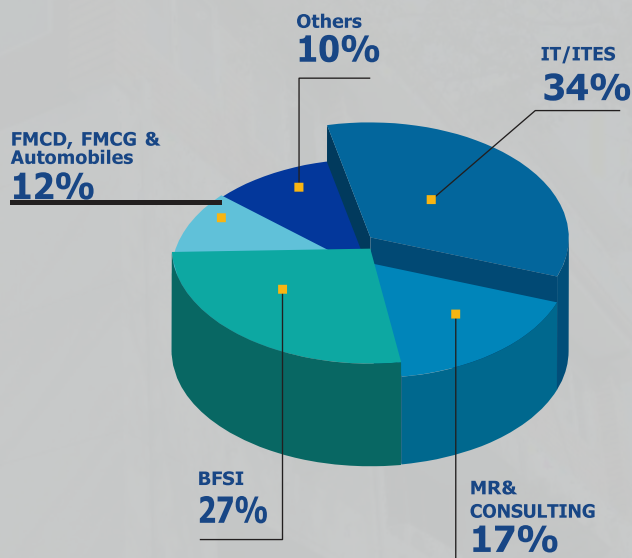
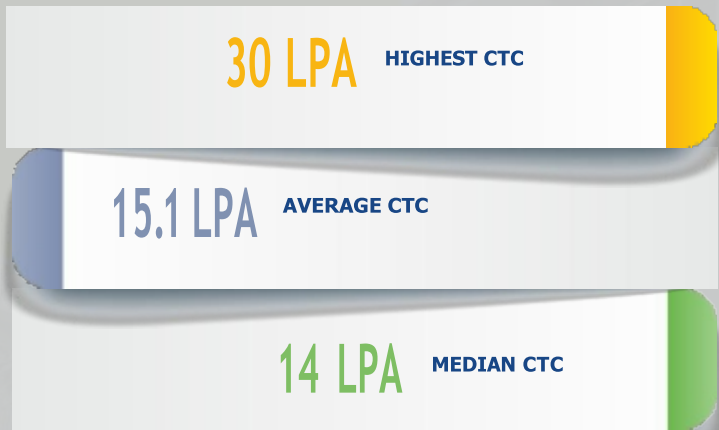


ACADEMIC DIVERSITY



PLACEMENT STATISTICS

SECTOR WISE OFFERS



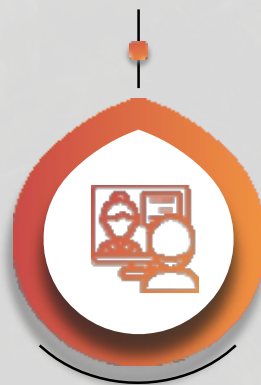
TOTAL RECRUITERS
152



NEW RECRUITERS
50



PPO & PPI
52



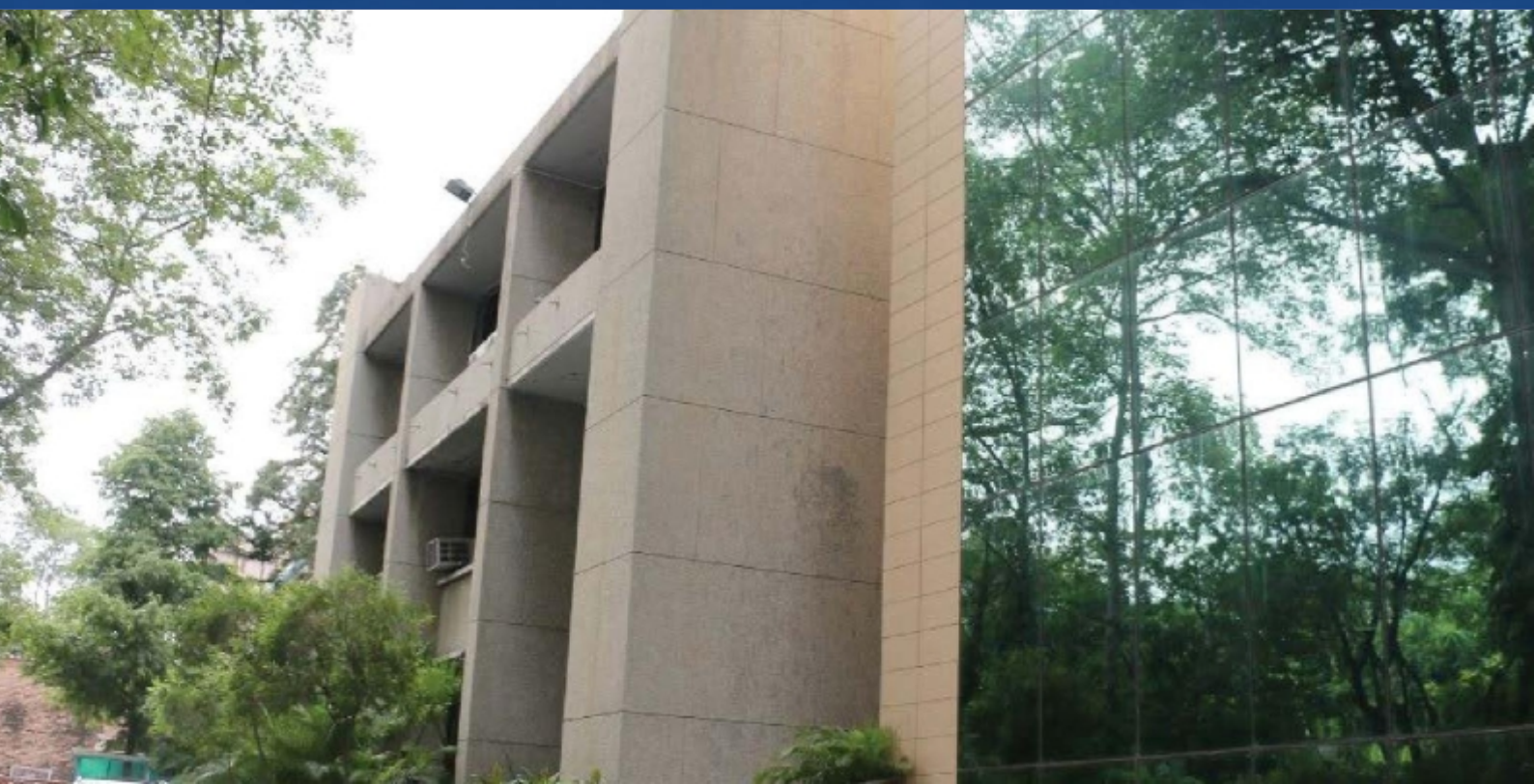
SECTOR SPECIFIC ROLES OFFERED

IT/ITES SECTOR

Trending with the growing demand in the technology sector, 34% of the batch secured placement in the IT/ITES sector. Diverse roles like Senior Management Trainee – Business Presales Specialist, Senior Management Trainee, Senior Management Trainee – Product Management Group, Senior Management Trainee – Business Marketing, Senior Management Trainee – Business Management Group (Digital Foundation Business), Senior Management Trainee – Sales Support, Senior Management Trainee (CFO Office), Senior Management Trainee (Business Consultant), Inside Sales - Account Manager, Business Analyst, Market Research Specialist, Business Development Analyst, Management Trainee - Human Resources, etc. were offered to the students. Key Recruiters in the IT/ITES sector are Accenture, Gartner, Cognizant, HCL Technologies, IGT Solutions, Hughes Systique Corporation, Dell Technologies, IBM, Wipro Limited, Capgemini, Kyndryl (IBM), Newgen Software & Tech Mahindra, etc.

BFSI

BFSI is one of the most sought-after sectors for placements. This year 27% of the batch was placed in this sector. Diverse roles and profiles ranging from Management Associate – Wealth, Deputy Manager, Management Trainee - Institutional (Sales), Business Analyst, Relationship Manager, Credit Manager, Product & Channel Manager, RTFX - Sales Manager, Relationship Manager - Private Banking, Senior Analyst - Portfolio Management, Senior Management Trainee – Business Presales Specialist, Data Governance role, Management Trainee - Human Resource Business Partner, Management Trainee - Financial Institutions Group, Investment Banking - Associate, Deputy Manager, Emerging Local Corporates, etc. were offered to the students. Leading recruiters from the BFSI sector includes 360 ONE Wealth (Formerly IIFL Wealth), ICICI Bank, HSBC India, Barclays, Bank of America, Axis Bank, IDFC FIRST Bank, HDFC Bank, YES Bank, Kotak Mahindra Bank, ICRA, Yubi (Formerly CredAvenue), Darashaw, Macquarie and Acuity Knowledge Partners have hired students. DBS Bank, IDBI Bank, Fullerton India Credit Company Ltd., Ujjivan Small Finance Bank, etc. had visited for the first time and hired students.



SECTOR SPECIFIC ROLES OFFERED



MARKET RESEARCH & CONSULTING

Market Research & Consulting is one of the growing sectors with 17% of the batch being placed in it. We saw participation from organizations such as McKinsey Knowledge Center, Arcesium, Deloitte USI, Kroll, GEP, Axtia, KPMG Global Services, EY GDS, EY India, PwC India Acceleration Center, etc hired students. In this sector students were offered diverse roles such as PEPI Capabilities & Insights Analyst, Analyst-Financial Operations, Analyst - Human Capital – HRT, Analyst - Human Capital - OT, Consultant, Global Valuation, Consultant Associate, Associate Consultant - Deal Advisory & Strategy, Consulting Knowledge - Analyst, Consultant (ITT), Senior Research Analyst, Research Associate – Catalyst Consulting, Associate - Deals Technology & Data Solutions, etc.

AUTOMOBILE, RETAIL & MANUFACTURING

Major recruiters in these sectors include BMW, Asian Paints, Relaxo, Tesco, DHL Express, JK Lakshmi Cement Ltd., Adani Group, Tata Advanced Systems Ltd., Berger Paints India Ltd., Aarti Industries Limited, Mahindra & Mahindra, Hero MotoCorp Classic Legends, and Tata Motors Offering roles in Sales & Marketing, HR, and Operations.



FMCG, FMCD & MEDIA

FMCG, FMCD & Media sectors had some of the biggest corporate houses recruiting and offering one of the highest compensations for roles, including IB Manager, Sales Trainee, Area Sales Manager, Specialist, Area Manager Trainee (Sales), Assistant Manager – Response, Sales Trainee & Management Trainee.

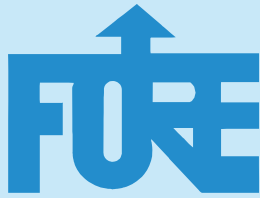
Some of the most prominent organizations including ITC Ltd., United Biscuits (Pladis Global), MTR Foods, Atomberg Technologies, Carrier Global and TTK Prestige recruited students.

RECRUITERS AT A GLANCE

RECRUITERS AT A GLANCE



FOUNDATION FOR ORGANISATIONAL
RESEARCH AND EDUCATION
FORE SCHOOL OF MANAGEMENT
NEW DELHI

placements@fsm.ac.in

Prof. Rajneesh Chauhan, Dean (Corporate Relations)

Mr. Vivek Chakrapani

AGM- Corporate Relations

✉ vivek@fsm.ac.in

☎ 9891051966 / 011-41242412

Mr. Brijesh Ramtani

Manager - Placements

✉ brijesh@fsm.ac.in

☎ 9654482676 / 011-41242472

Mr. Rajiv Ranjan

Manager - Placements

✉ rajiv@fsm.ac.in

☎ 9999525129 / 011-41242423

Ms. Monika Tiwari

Executive- Placements

✉ monika@fsm.ac.in

☎ 8800381160 / (011) 46485534

Ms. Shweta Sharma

Alumni Relations Associate

✉ shweta.sharma@fsm.ac.in

☎ 9911837929 / 011-41242409

